

# **Chrono Tasker** (v1.0)

[www.softlab.adibaru.ro/chrono-tasker](http://www.softlab.adibaru.ro/chrono-tasker)

© Adi Barbu 2018

**CONTENTS**

**Install Guide ..... 3**

**How to Use ..... 6**

**Uninstall Guide ..... 16**

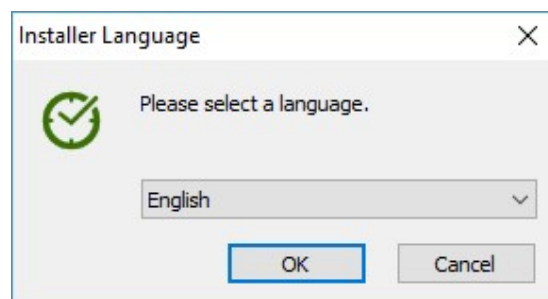
# 1. Install Guide

To install the application, please open the installer and choose – in the newly opened window – to run the installer as administrator in Windows OS.

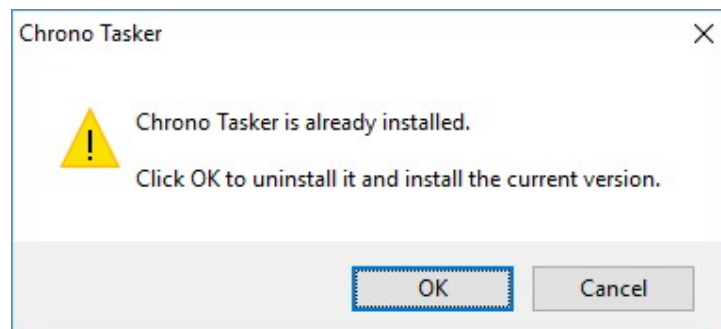
Running the file as administrator is necessary because the application will be installed on the entire OS, for all of the system's users.

To install the application, please follow the instructions below.

Choose the installer language and click OK.

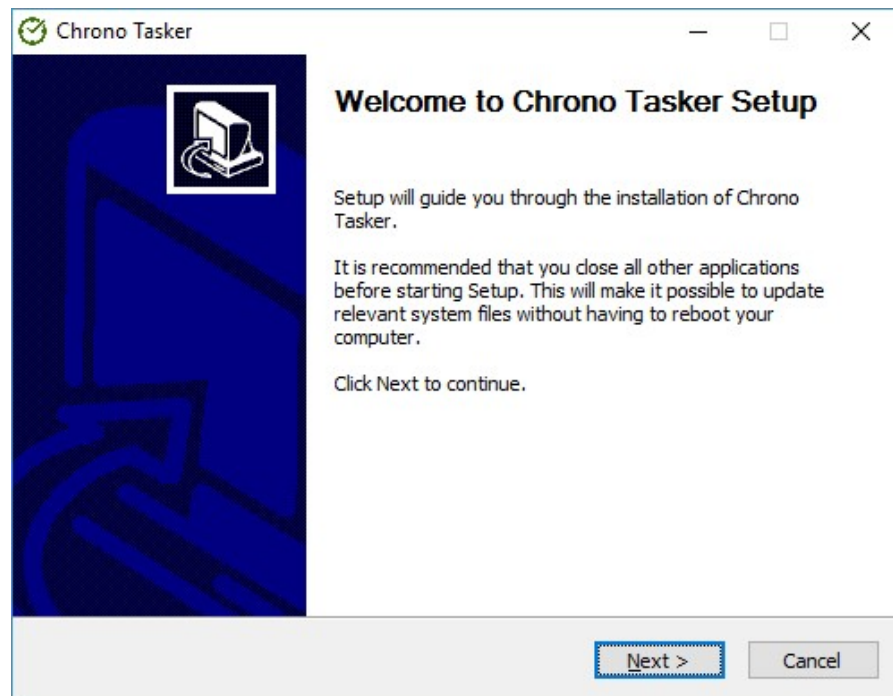


If the application is already installed, the following notification window will pop up:

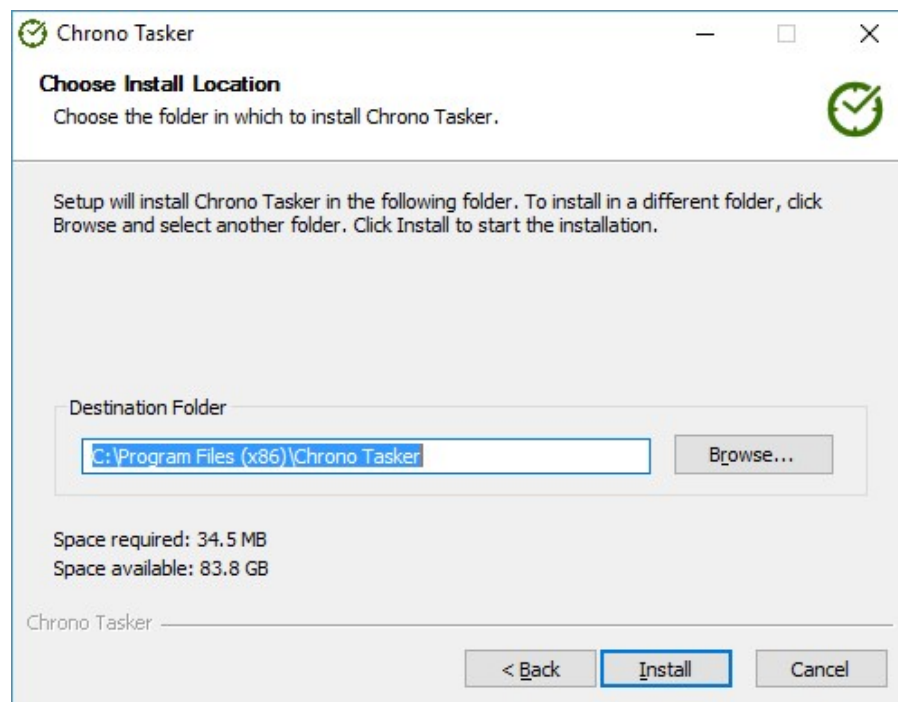


Click *OK* to begin the uninstall process, followed by the install process of the current version. Click *Cancel* to abandon the install process and close the window.

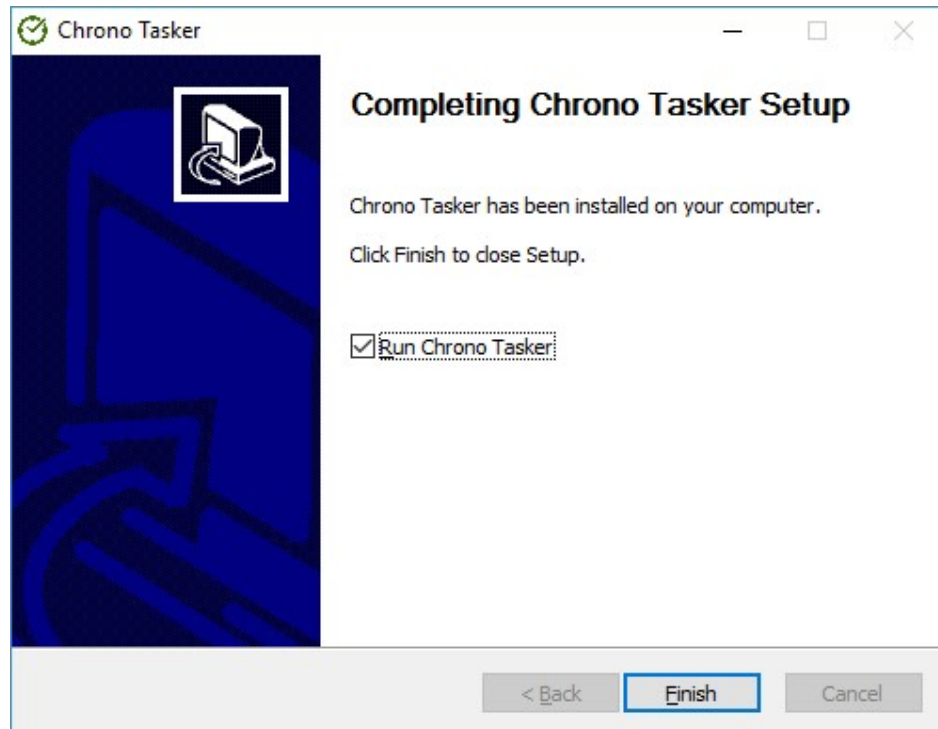
The welcome window will be displayed. Click *Next*.



Choose the installation folder by clicking *Browse* – in case you wish to install the application in a different folder than the default one – then click *Install*.



Wait for the install process to finish. The process will end once the window confirms the installation. Check *Run Chrono Tasker* to run the application after closing the current window and click *Finish*.



## 2. How to Use

Chrono Tasker allows the temporization of actions, both on the level of the OS and of the application itself. It is also used to manually stopwatch of some of the user's activities, by specifying the beginning and the finish moment of the chronometration.

The application does not require substantial processing and memorizing resources, the OS' minimum being sufficient. However, as a recommended setting, the computer's screen's resolution should be at least 1024x768, otherwise the application will not be fully displayed in the extended display mode.

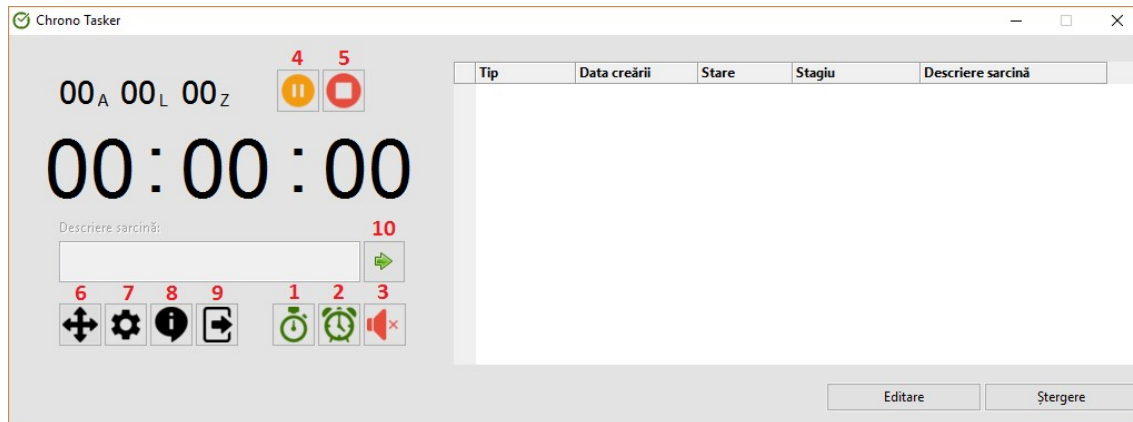
### **The Application's General Features:**

- it is offered with a freeware license;
- it is compatible with Windows 10, 8 and 7;
- it allows the setting of a maximum of 101 timer or stopwatch tasks;
- the maximum limit of temporization is December 31, 2037, 11:59:59 PM;
- the created tasks will be listed in a table, the user being then able to edit or delete them;
- the current stage of each running task can be paused and resumed afterward;
- the user can choose to run the application on computer startup, running the application with full permissions within the system and running the application in the background;
- the user can choose the display language – English or Romanian – and change the size of the window according to preset display modes (compact or extended);
- the user can choose to receive an update notification once a newer version of the application becomes available.

### **Temporizable actions:**

- Running a file (program or script), of commands in *Command Prompt* and of actions such as turning the system off and restarting the computer, as well as returning to the login screen in Windows and logging off the current user.
- Opening a document with the it's type associated program (identified by the file extension) and of Internet addresses in the web browser.
- Displaying a message;
- Playing a beep or an audio file – chosen from a list or specified by the user.

Running the application will lead to the display of the main graphic interface, which is meant to provide access to all implemented functions.



**Fig 1. The application's main window**

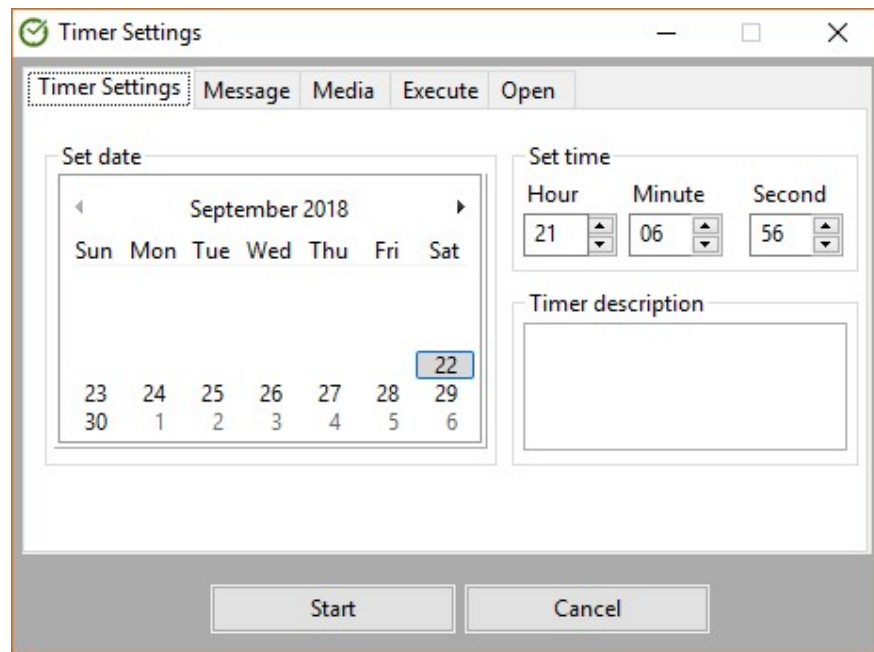
According to the numbering in the image, the meaning of the buttons with icons displayed in the window is:

- button 1: start stopwatch;
- button 2: set timer;
- button 3: stop sound played on triggering a timer;
- button 4: pause/resume current task (the selected one);
- button 5: stop current task (the selected one);
- button 6: change window mode – switch between compact and extended mode;
- button 7: application settings;
- button 8: about the application;
- button 9: minimize to the notification area of the Windows taskbar;
- button 10: add/change description of the current task (the selected one).

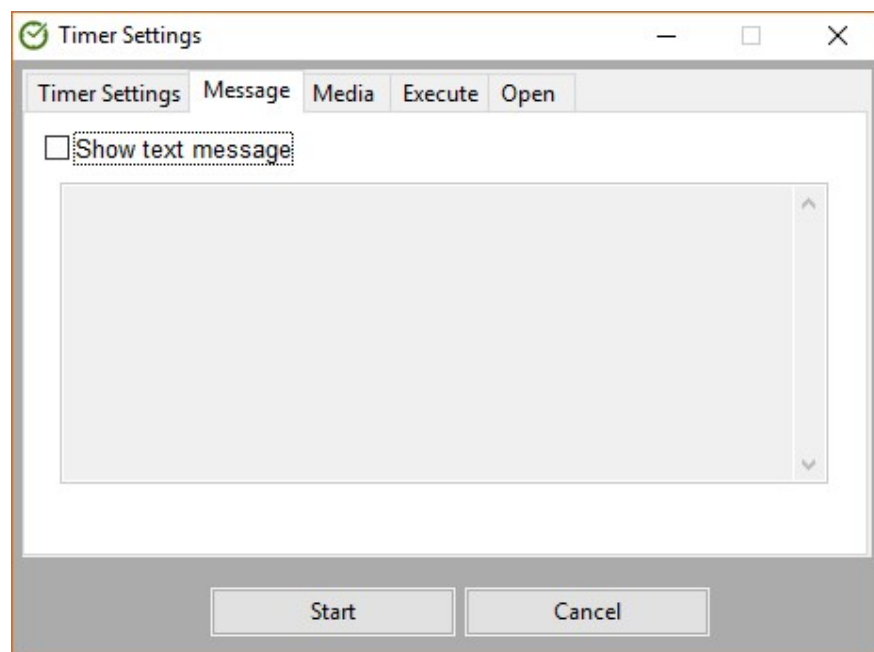
## ➤ Setting a Timer

To set a timer, click *Set timer* (button 2 from *fig. 1*), which will open a window from which the user can specify and configure the actions to be executed on the level of the OS and the user's notification options when triggering the execution of the planned tasks/actions.

From the “Set timer” tab, select the date from the displayed timetable, specify the triggering hour, minute and second and introduce the timer's description.

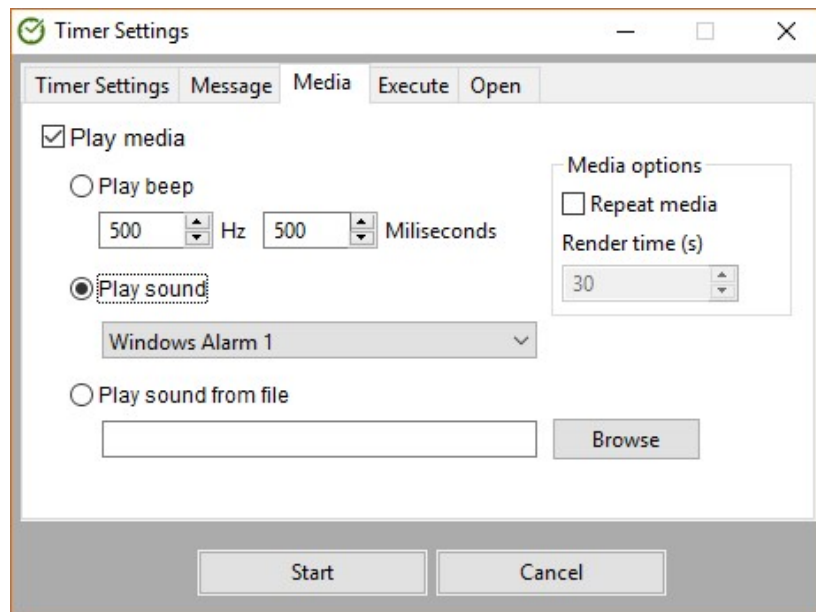


From the “Message” tab you can introduce a text to be displayed at the timer’s triggering.



From the “Media” tab you can choose to play a beep or a .wav audio file (which exists in the list of available resources or is specified by the user).

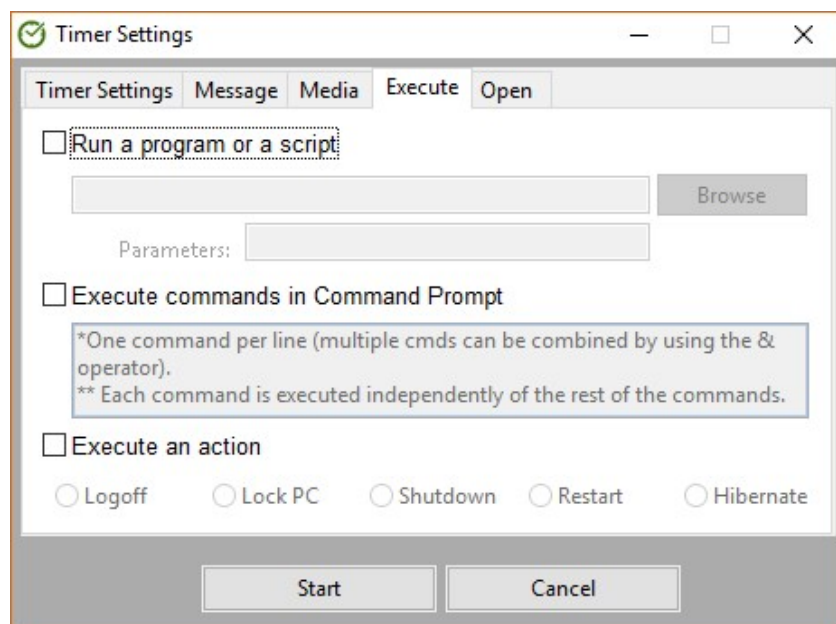




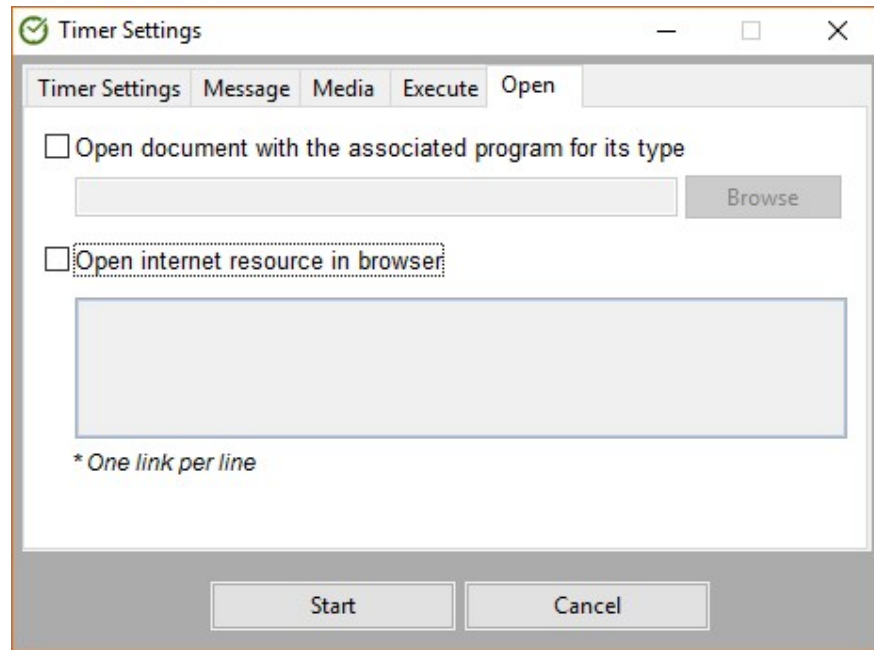
The “Repeat media” option allows the repetition of a the played sound for a certain time, expressed in seconds.

To stop the audio play of a triggered timer, the user must press button 3 from fig. 1.

In the “Execute” tab you can specify a program/script to be executed, along with the desired running parameters; a command or a set of commands to be executed in Command Prompt; and one of the available actions: logoff, lock PC, shutdown, restart and hibernate.



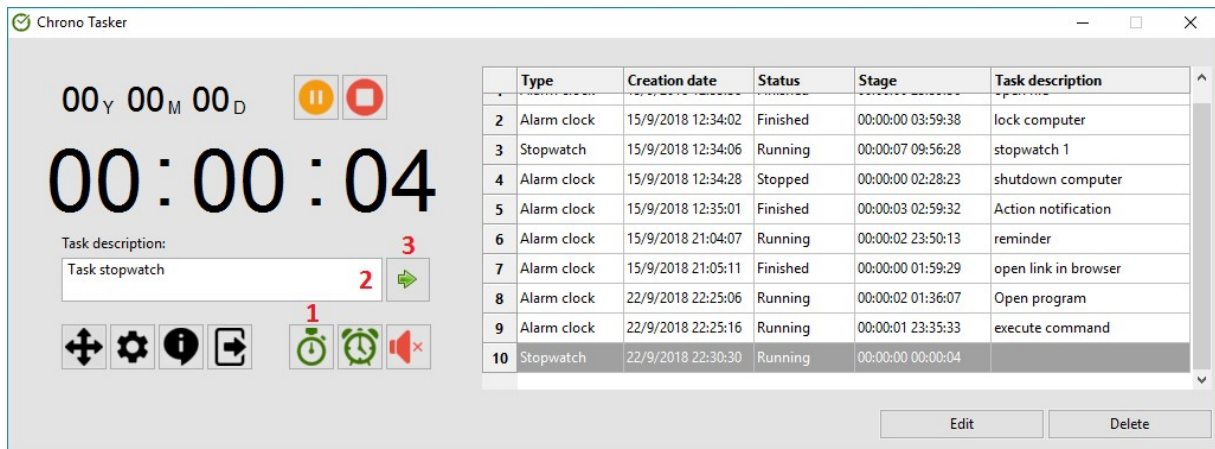
From the “Open” tab you can choose a document to be opened with the associated program or specify a link, or several links, to be accessed in the browser.



## ➤ Starting a Stopwatch

Starting a stopwatch can be done by clicking on *Start stopwatch* (button 1 from fig. 1).

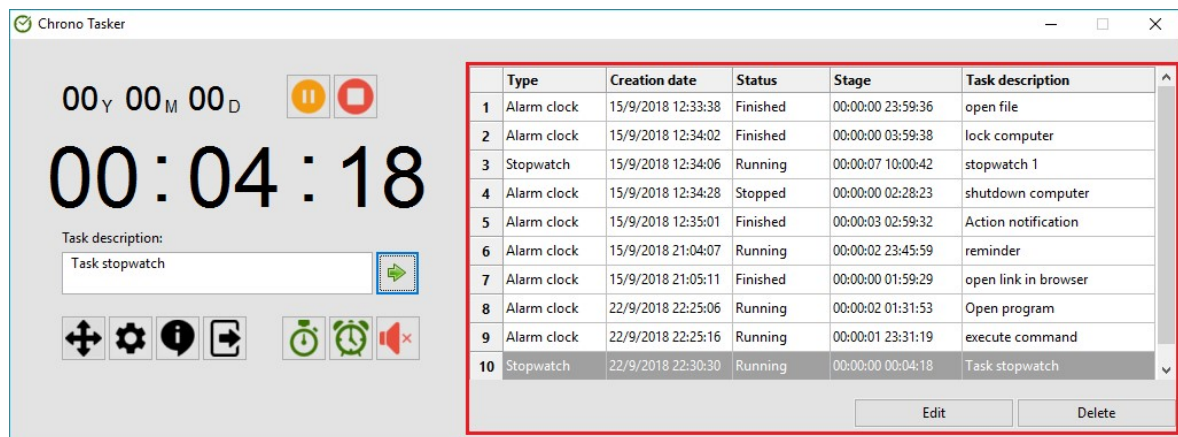
Introducing a description for identifying the created tasks will then be available from the main window. The figure below shows the steps necessary to start a stopwatch and to set a task description.



## ➤ Managing the created tasks

The stopwatches and timers will be listed in the order in which they were created, within a table – showcased in the figure below. The table is numbered and structured in five columns like this:

- *Type*: displays the task's type (timer or stopwatch);
- *Creation date*: displays the date and moment when the task was created;
- *Status*: displays the task's current status – running, paused, stopped or finished;
- *Stage*: displays the time passed since the stopwatch was started or the time left until the actions of the timer will be triggered – the display format's structure is *years:months:days hours:minutes:seconds*;
- *Task description*: displays the text introduced by the user as a description of the task.



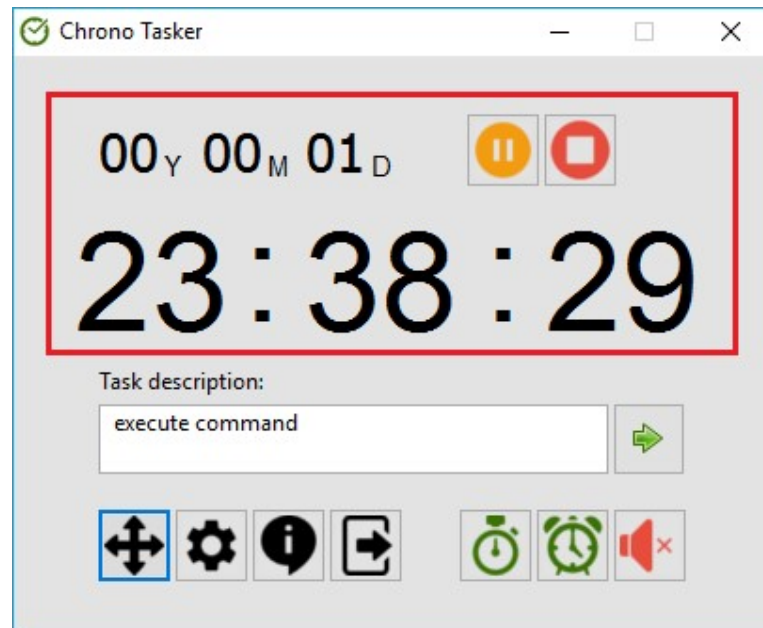
Selecting a certain task in the table will select all the columns in a row and display its stage in the application's clock, case in which the task can be paused or stopped.

The following two buttons are also attached to the table:

- **Edit**. Allows the user to edit a task's features: in the case of a stopwatch-type task, a window will be displayed, by means of which the description of the stopwatch can be introduced or edited, and, in the case of a timer-type task, the configuration window will pop up – the same window displayed on creating a new timer –, which will allow the user to change actions and settings configured for the selected task; if more tasks are selected, the one taken into consideration will be the first.
- **Delete**. Allows the permanent deletion of the selected task(s). Selecting the task(s) can be done either by mouse – which allows multiple selection – or by pressing the up and down keys.

## ➤ Viewing a Task's Stage

The stages of the created tasks can be displayed in a clock in the main window, in which the time will be displayed both in hours, minutes and seconds, and in days, months and years. The clock will display the selected task's stage, or, in the absence of a selection, the last created task.



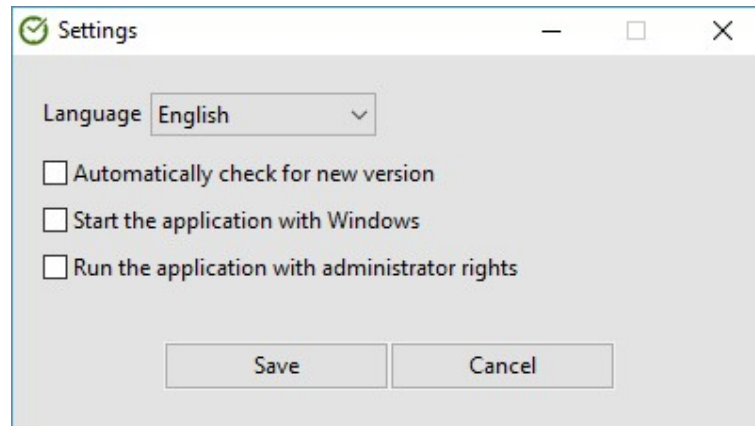
The available options for a task whose stage is on display are:

- **Pause task – orange button:** the selected task is temporarily stopped (paused), with the possibility of resuming it by clicking the same button, which will resume the stage without time discontinuities. In the case of a timer, the triggering moment will be delayed with the duration of the pause, so that the initial duration until the triggering will remain the same.
- **Stop task – red button:** the selected task will be permanently stopped, with no possibility to resume it. The stopped task will continue to show up in the task list, the user being able to delete it by clicking “Delete” button.

## ➤ Application Settings

“*Change window mode*” button (showcased by number 6 in fig. 1) allows switching between extended mode (fig. 1) and compact mode (fig. from the previous section) of the main window, the difference between the two being that the extended mode will also display the table which contains the tasks managed by the application, while the compact mode will greatly reduce the window's size by eliminating the task table.

***“Application settings” button*** (showcased by number 7 in fig. 1) opens the window “Settings”, which contains a list of customization options for the functioning and display of the application.



***Settings window***

Options in the window – shown above – have the following meanings:

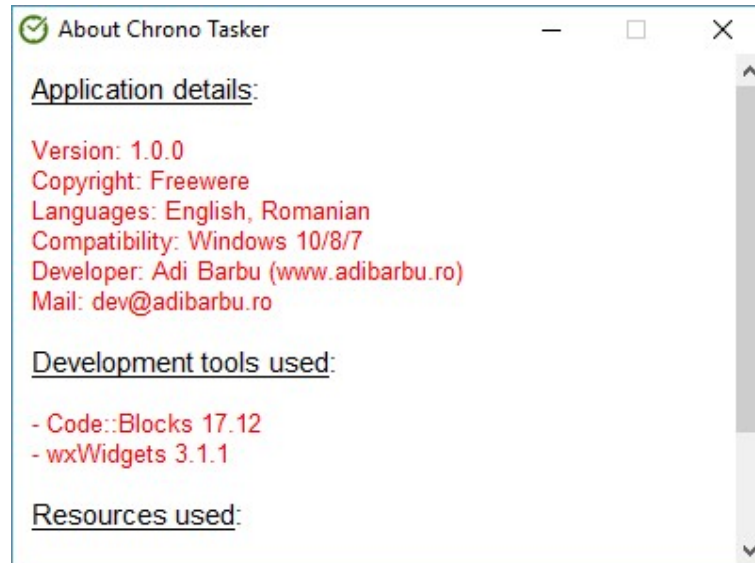
- **Language:** allows the selection of English or Romanian as a display language for the graphic interfaces.
- **Automatically check for a new version:** allows the display of a notification when a new version of the application become available – the application will check for a new version when the program is executed or when the option is ticked in case it had not been ticked.
- **Start the application with Windows:** allows the application to be started together with Windows, so that the program can keep running for as long as the PC is being used.
- **Run the application with administrator rights:** allows the application to be started with full permission over the system, so that the tasks which require administrator permission (such as executing programs or commands) can be run.

The settings will be applied once the “Save” button is clicked. For example, the main window’s language will be changed instantly. If any errors are encountered upon applying the settings, they will be displayed in notification windows.

The setting “Start application as administrator” will only be in effect after the application is restarted.

If the “Automatically check for a new versions” option is ticked and if a new version of the application is discovered, a window will be displayed, in which the user may choose to download the application, which will open the official webpage of the software in the browser, from which the download may begin.

**“About the application” button** (showcased by number 8 in fig. 1) opens a window with information about the application, which contains details such as the current version, the license with which it is distributed, compatibility, available languages, contact data for the developer and instruments and resources used for developing the application.

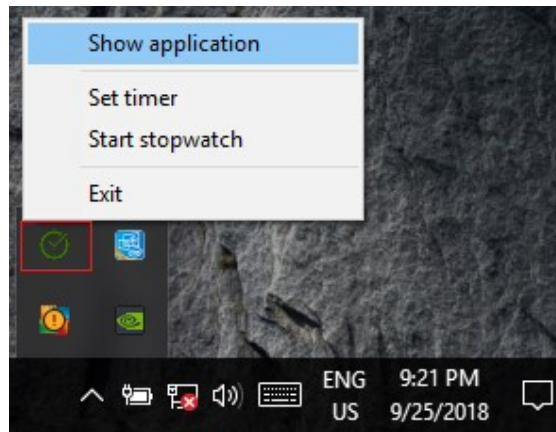


*About the application window*

**“Minimize to Windows taskbar” button** (showcased by number 9 in fig. 1) hides the main window on the screen, while the software continues to run in the system tray. To redisplay the window, the user will have to click the option “Show application” from the menu associated to the software showing up in the notification area of the operating system’s task bar (fig. below).

### ➤ **Accessing the Menu from the Windows Taskbar Notification Area**

Once the application is started, an icon will pop up in the notification area of the Windows task bar, allowing access to another menu of the application. The menu’s purpose is to provide a shortcut to the application’s main functions, but also to enable the redisplay of the main window after it is hidden.



**The application's menu in the Windows taskbar**

The menu contains the following options:

- **Show application:** displays the main window on the screen in case it had been hidden or displays the window in the forefront.
- **Set timer:** displays the configuration window of a new timer-type task.
- **Start stopwatch:** starts a stopwatch-type task – it will then be possible to add the stopwatch's description from the main interface.
- **Exit:** closes the application.



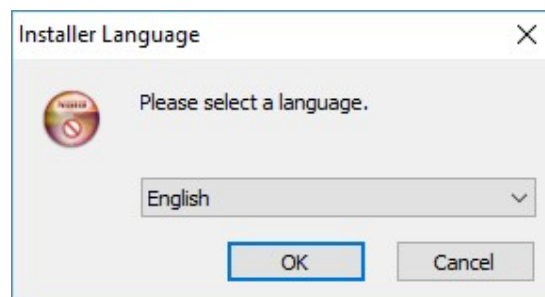
### 3. Uninstall Guide

Uninstalling the application will lead to the complete deletion of the files which make up the application, of the shortcuts created by the installer and of the system registers created during the installation or during the application's use. Starting the uninstall process can be done in the following two ways:

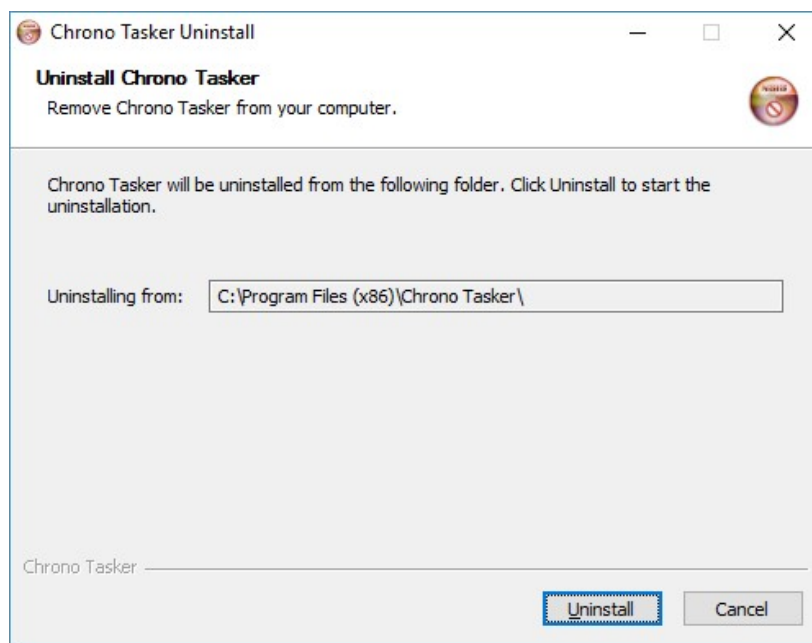
- by running the *uninstall.exe* file, located in the folder where Chrono Tasker was installed
- by accessing the *Programs and Features* window of the control panel and double clicking on Chrono Tasker from the list of programs installed in the OS.

To uninstall Chrono Tasker, follow the instructions below.

Choose the uninstaller's display language and click OK.



Click *Uninstall* to start deleting the application from the system.





Wait for the uninstaller to finish. From the newly displayed window click on *Finish* to end the uninstall process.

